

ÖZERAY
investments

GREENVILLE
Lapta - Kyrenia

April 2024- April 2026

After Sales Services



Maintenance



Renting

Location

- ✓ Kyrenia: 15 Minutes
- ✓ Nicosia: 40 Minutes
- ✓ Ercan Airport: 1 Hour
- ✓ Lapta Primary School: 6 Minutes
- ✓ Necat British College: 9 Minutes
- ✓ Lapta Yavuzlar High School:
5 Minutes
- ✓ Lapta Kindergarten: 3 Minutes
- ✓ Girne American University:
10 Minutes
- ✓ Arkin Creative Arts and Design
University: 15 Minutes
- ✓ Lapta Health Clinic: 5 Minutes
Beaches -1 km (10 min by walking)



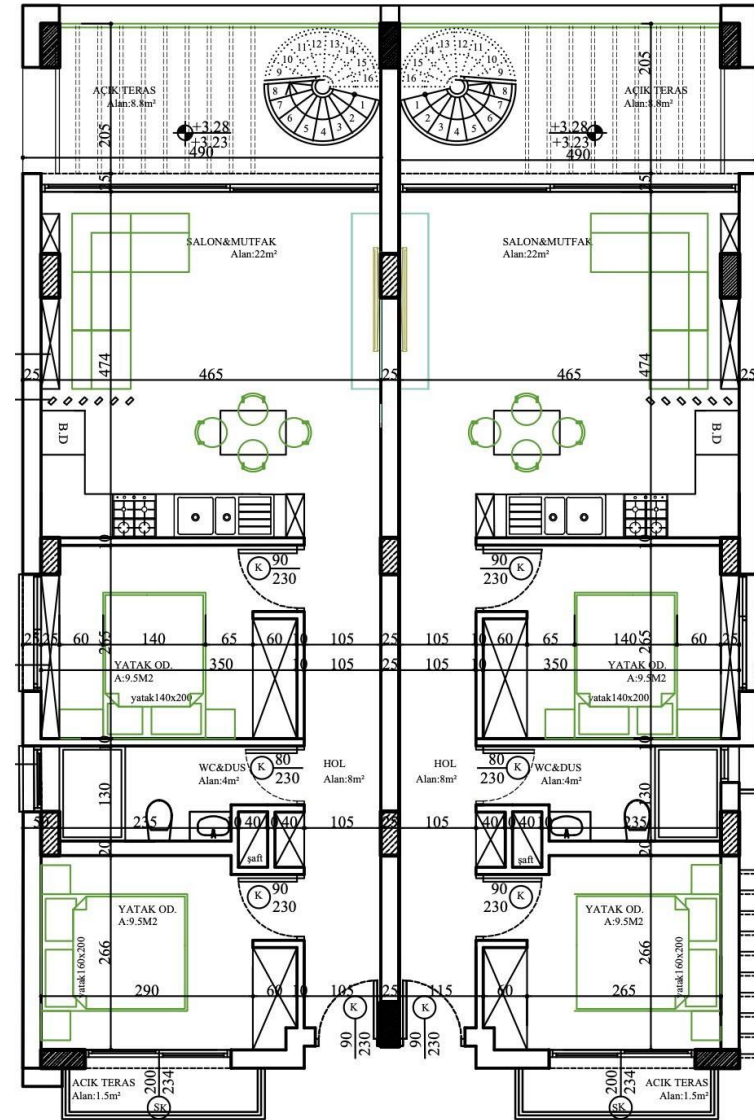
Facilities & Properties

- ✓ 20 2+1 Penthouses
- ✓ 20 2+1 Garden Apartments
- ✓ Communal Swimming Pool
- ✓ Gym
- ✓ Communal Parking Area
- ✓ 2 Playground
- ✓ 18 hotel-restaurant-cafe establishments, 3 pharmacies with a radius of 2 kms



2+1 Penthouse

- ✓ 60 sqm + 8 m2 balcony+ 1.5m2 balcony
- ✓ 60 sqm Roof Terrace with BBQ
- ✓ AC Infrastructure
- ✓ Open plan kitchen with quartz countertop
- ✓ Built-in wardrobes in the rooms



2+1 Garden Apartment

- ✓ 70 sqm +
- ✓ 13,5 – 46.2 sqm Garden + 13.5 m2 Terrace
- ✓ Built-in wardrobes in each bedroom
- ✓ Open Plan Kitchen
- ✓ Quartz Kitchen Countertop
- ✓ AC Infrastructure

