

ABOU EID

 *Celia Heights*

A WORLD OF REFINED ELEGANCE IN **DUBAI**



www.aboueidco.com

TABLE OF CONTENTS

CONTENTS



INTRODUCTION

01

OUR VISION

02

LOCATION

03

EXTERIOR

04

AMENITIES

05

INTERIOR

06

— STUDIO FLAT

— 1 BEDROOM FLAT

— 2 BEDROOM FLAT

TABLE OF



WELCOME TO
Celia Heights

ABOU EID

Featuring **G + 3P + 13** Lavish Floors.
High-end quality finishes
Integrated Smart Home System
Fully Equipped kitchens

This property not only offers a **physical space** but also
Embodies a **lifestyle**.

Elevate your expectations and **explore** the **unique**
Character and **charm** of this **exceptional structure**

We create **Extraordinary** living spaces that
Redefine **Luxury** and **Comfort**.



OUR VISION

ABOU EID

Celia heights aims to be a **landmark** that stands as a testament to our commitment to **quality, luxury,** and a Forward-thinking approach in real estate development

we provide **Extraordinary** living spaces that redefine **Luxury** and **Comfort,** focusing on providing the best **Amenities .**



AMENITIES



PROPERTY
MANAGEMENT



HIGH END QUALITY
FINISHES

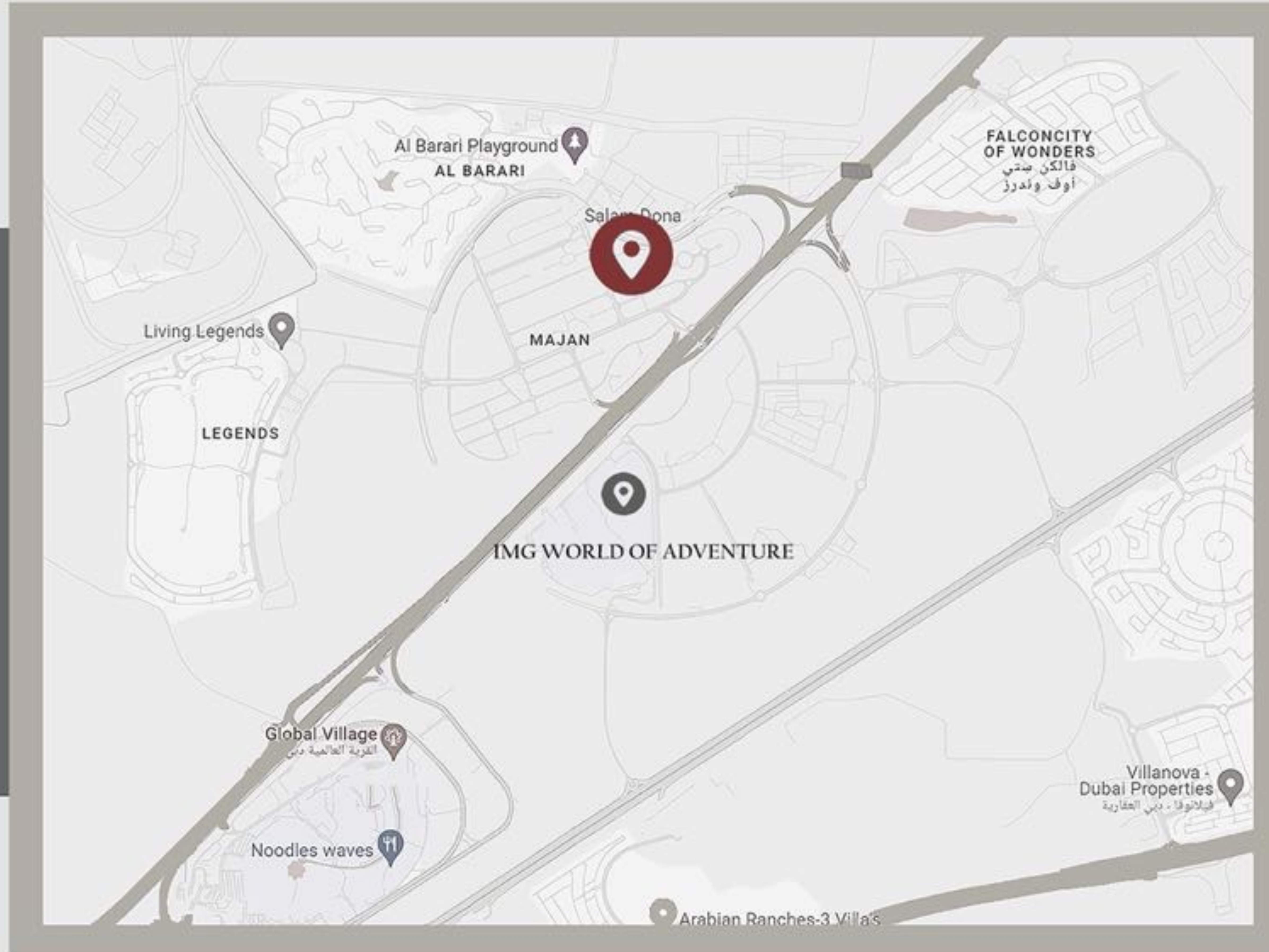


SMART HOME



OUR VISION

Location



DUBAI
DOWNTOWN

15 min



IMG WORLD
OF ADVENTURE

5 min



GLOBAL VILLAGE

5 min

EXTERIOR

DESIGN

82
STUDIOS

94
1.BHK

12
2.BHK

15
RETAIL

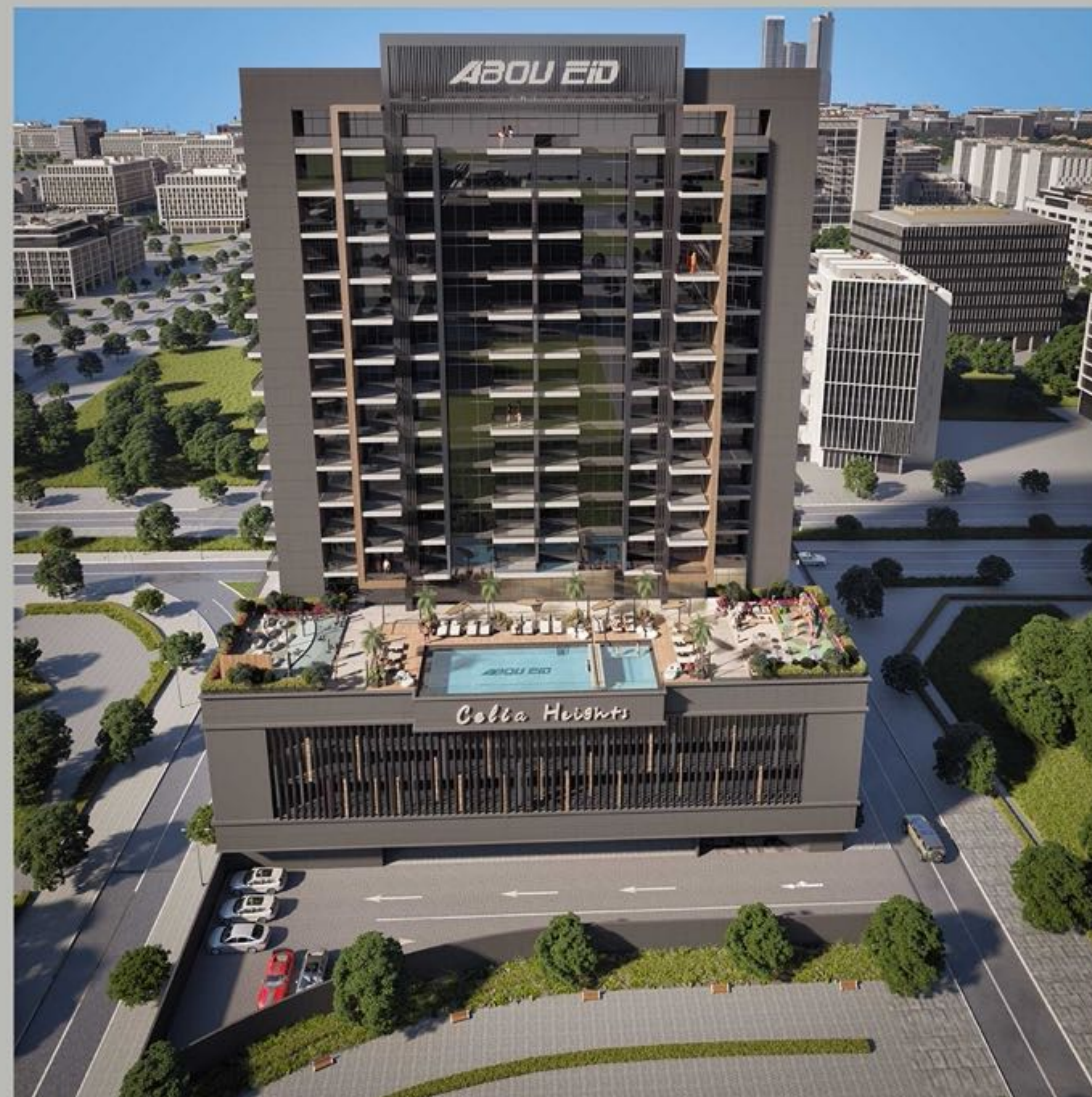




Step into a world of Elegance



our exterior design sets the stage for a lifestyle defined by **ELEGANCE** and **PRESTIGE**.



We look to provide comfort and convenience ...



Choose the wave of happiness

WORLD CLASS AMENITIES AWAIT

OUTDOOR FACILITIES

- Kids playground
- Outdoor gym
- Outdoor cinema
- Swimming pool



MODERN

ELEGANCE



Luxurious



Entertainment with cinema screen



fully furnished kitchen appliances



Kids play area



High-class gym



Adults and kids pool



Smart home system



Luxurious lobby



Barbeque area



Fire pit seating area



Celia Heights

High-class GYM



LOBBY





INTERIOR

Discover a realm of possibilities as you Explore our celia heights **interior design.**

Plan layout



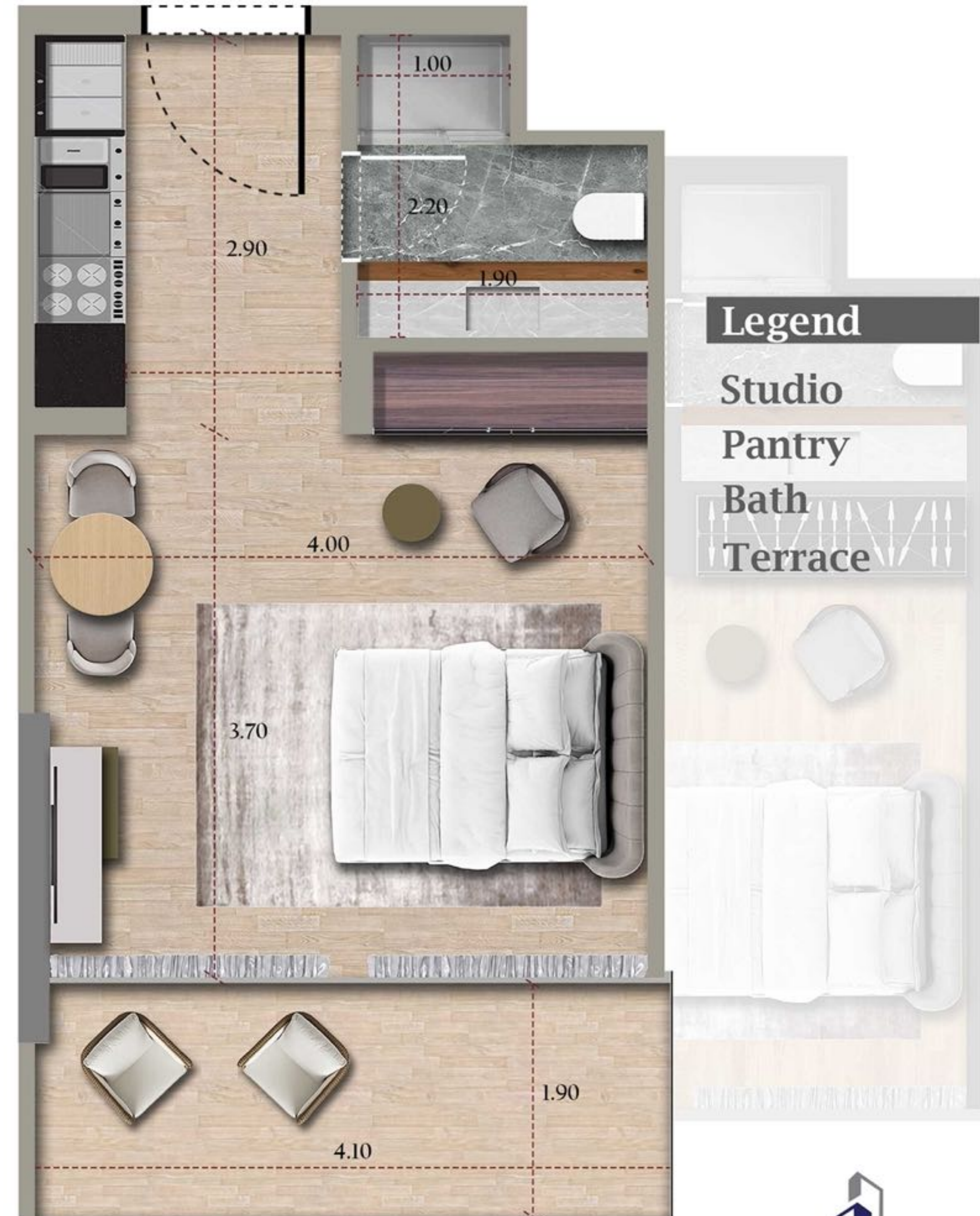
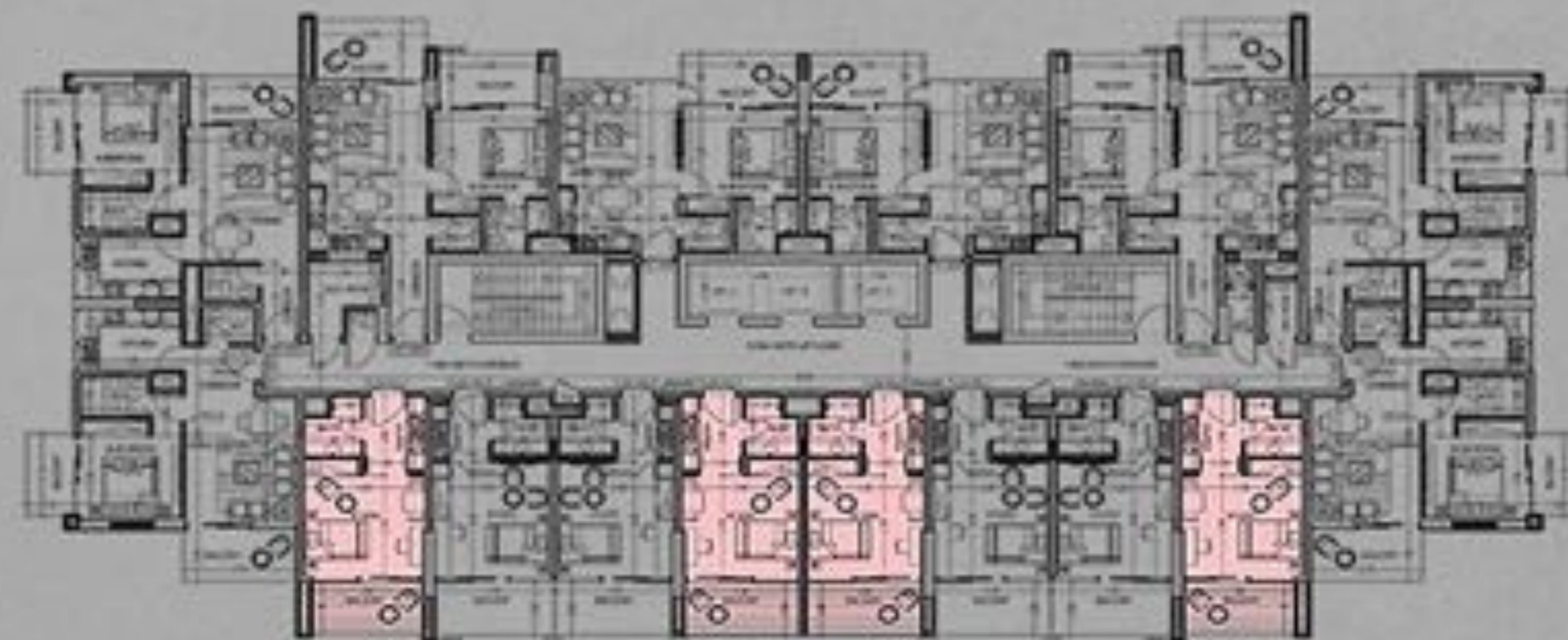
Studio

Its characterized by a **monochromatic** color palette, **clean lines**, **minimalism**, **Natural materials**, and **natural light**.

An open-layout floor plan that joins multiple spaces into one, promoting an **Airy ambiance**. Clean lines, sleek surfaces, and a **minimalist aesthetic**.

Location : 2nd to 10th floor plans
Number of flats : 36 flats

Total flat area : 383.78 ft²



MODERN INTERIOR

An open layout floor plan that joins multiple spaces into one, promoting an airyAmbiance. Clean lines, sleek surfaces, and a minimalist aesthetic.



Plan layout



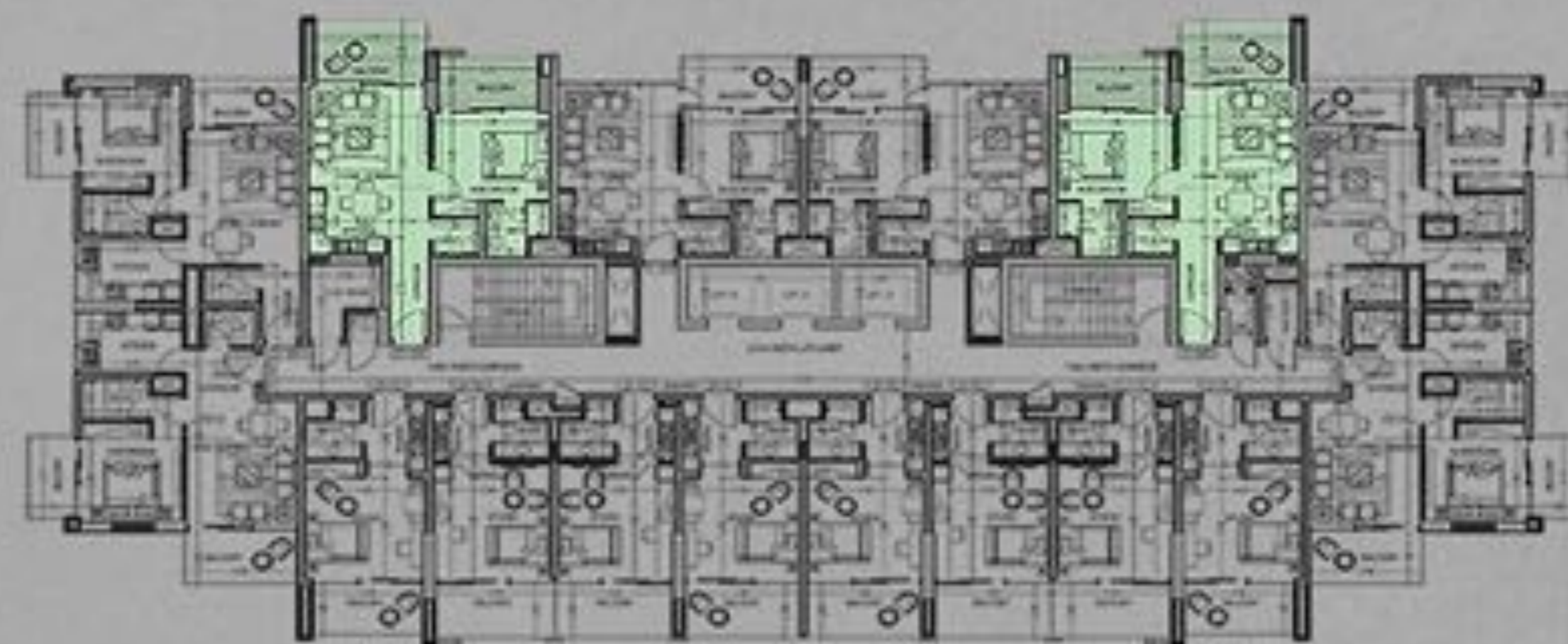
1 Bedroom

Experience the **epitome** of comfort in thoughtfully designed spaces where every detail tells a story of **sophistication**.

Your dream home awaits, where **comfort, style,** and a **sense** of home converge in perfect **Harmony**.

Location : 2nd to 13th floor plans
Number of flats : 24 flats

Total flat area : 739.00 ft²



Legend

- Living
- Dining
- Kitchen
- Toilet
- M.bedroom
- Bathroom
- Balcony

MODERN INTERIOR

An open layout floor plan that joins multiple spaces into one, promoting an airy Ambiance. Clean lines, sleek surfaces, and a minimalist aesthetic.



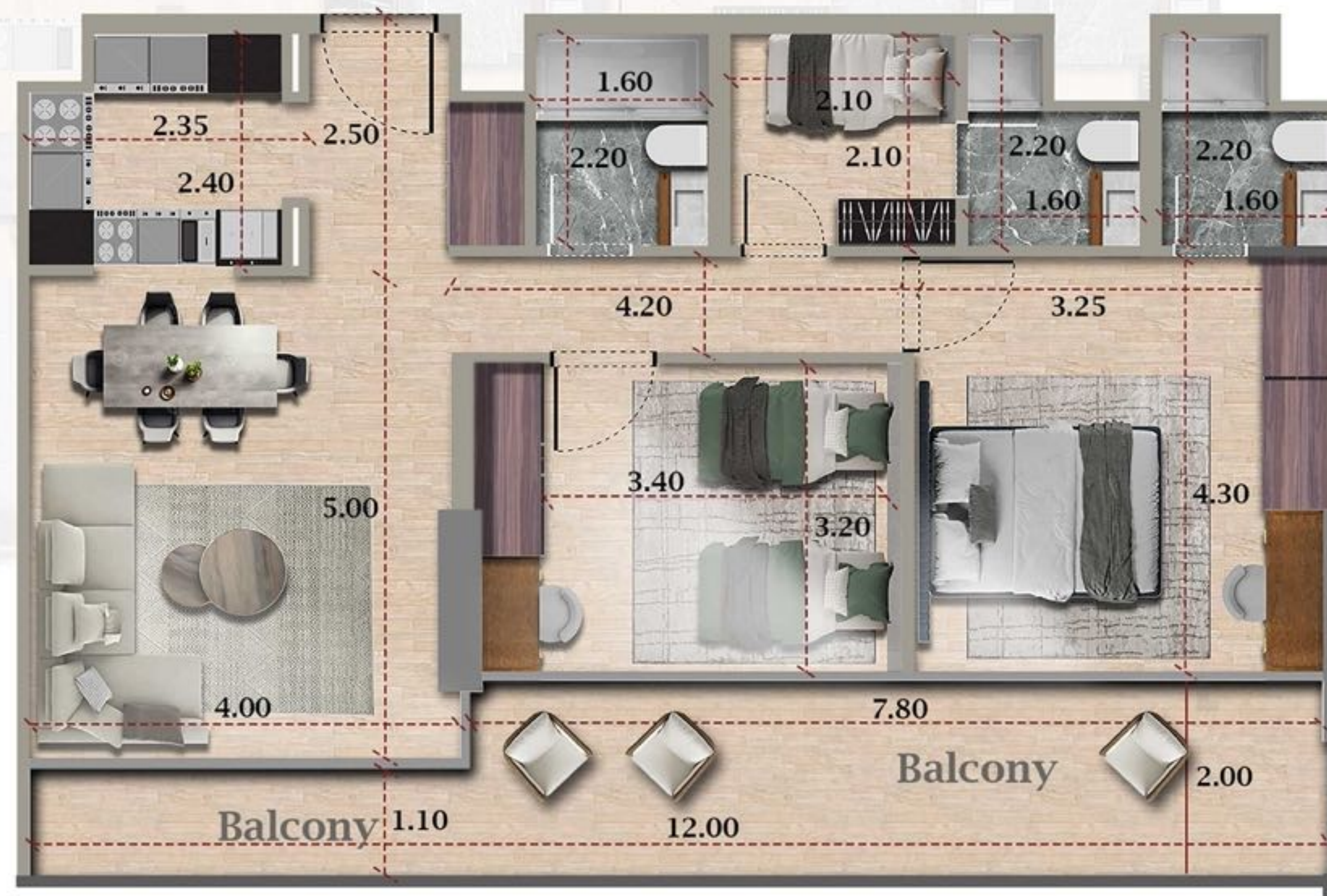
Plan layout



2 Bedroom

Immerse yourself in spaces where **natural light** dances upon **bespoke Furnishings**

An **open layout** invite a **seamless flow** of daily life, creating an **ambiance** that Resonates with your **aspiration**



Legend

Kitchen

Dinning

Living

Kids bedroom

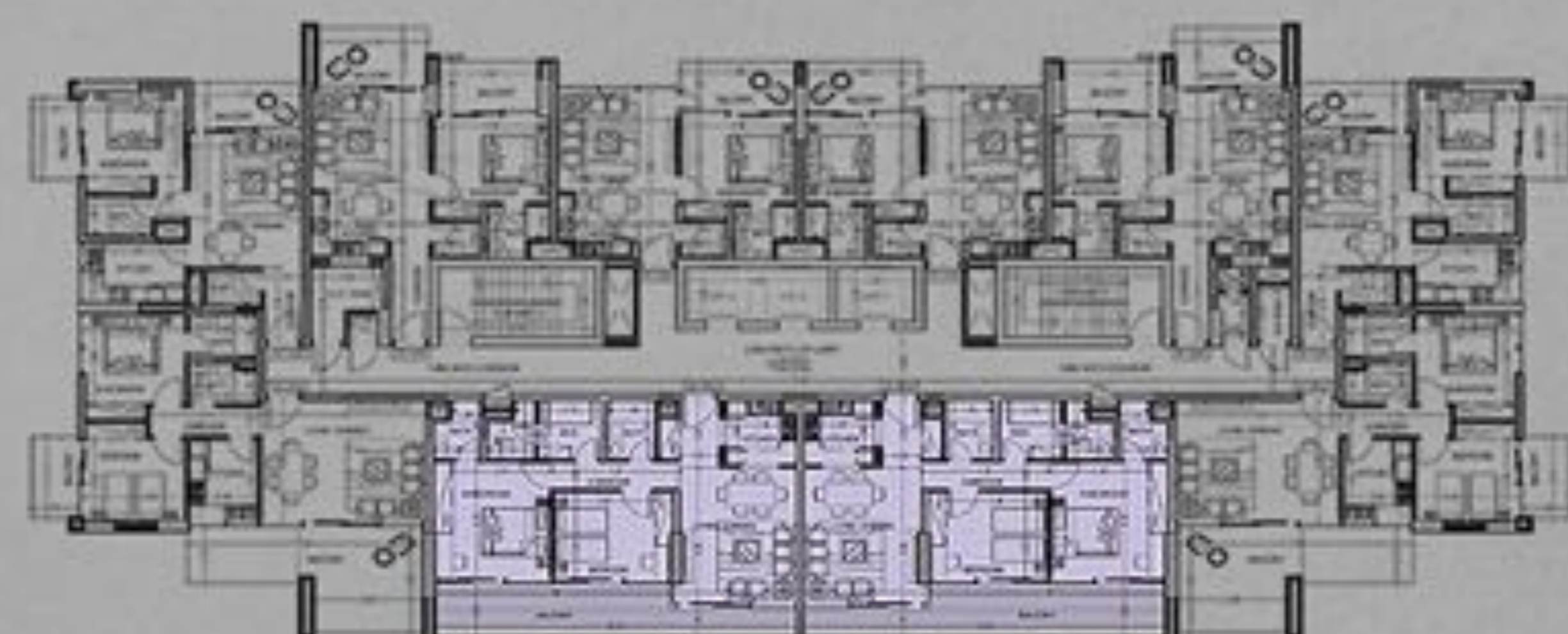
Maid bedroom

Master bedroom

Balcony

Location : 11th to 13th floor plans
Number of flats : 6 flats

Total flat area : 1136.94 ft²



MODERN INTERIOR

An **open** layout enhances the sense of space, fostering a **Fluidity** that accommodates various lifestyle preferences.



MODERN INTERIOR

Creating an inviting atmosphere that seamlessly merges with the Carefully selected color palette.



PAYMENT PLAN

48 months

10%

DOWN PAYMENT

1%

45 MONTHLY
PAYMENT

10%

AFTER 3
MONTHS

5%

4 ANNUAL
PAYMENTS

15%

ON HANDOVER
30 MONTH

OWN
YOUR
DREAM HOUSE





IMPROVE YOUR
QUALITY OF LIFE

ABOU EID



📍 Dubai, Business bay,
Oxford tower, office 604

☎ +971 45 809 941
+971 58 627 0601

✉ info@aboueidco.com

🌐 www.aboueidco.com



 *Celia
Heights*